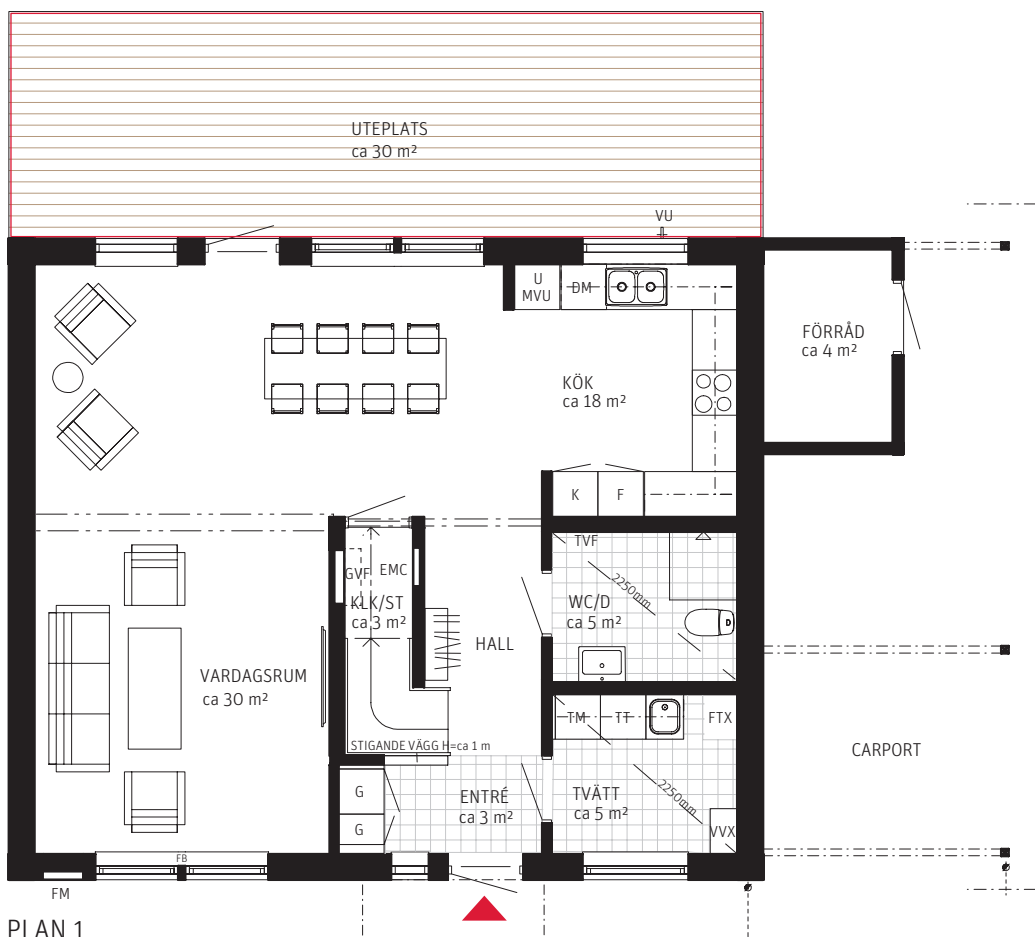
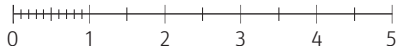


5 RoK, ca 145 m²

Stensjöparken 1 Hus 27, plan 1



METER SKALA 1:100



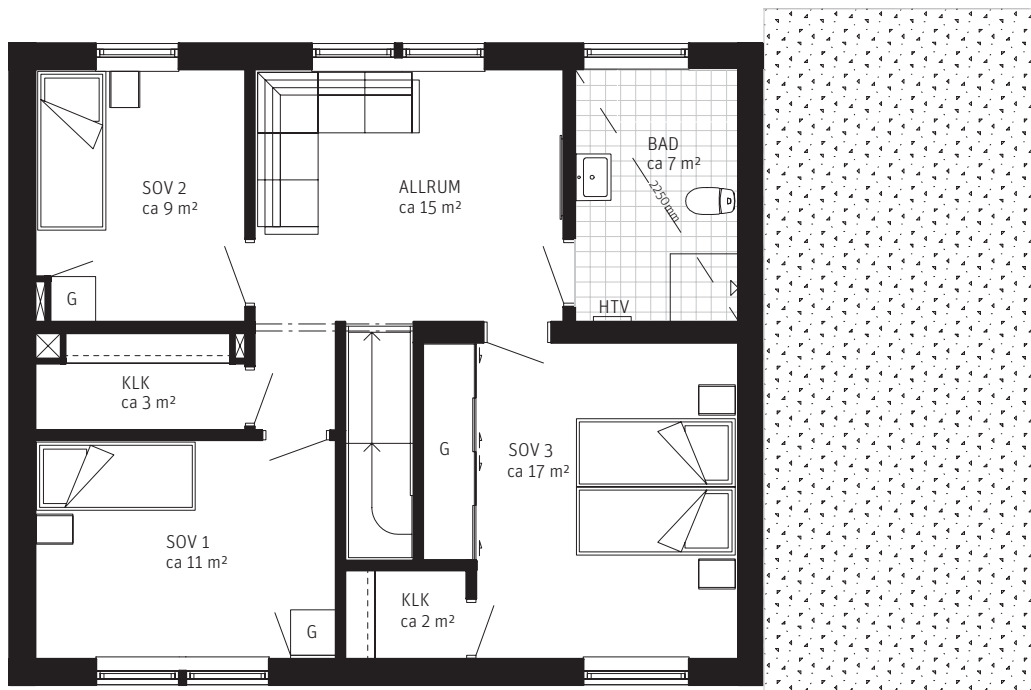
FÖRKLARINGAR

Generell takhöjd i boningshus ca 2500 mm, om inget annat anges.

G	Garderoab	Spishäll	Synlig takbalk
	Skjutdörrar	Ugn/Mikro i högskåp	Trumma för spisfläkt
KLK	Klädkammare	HTV	Handdukstork (vattenburen)
FRD/ST	Förråd/Städ	TM	Tvättmaskin
DM	Diskmaskin	TT	Torktumlare
F	Frysskåp		Dusch med duschväggar
K	Kylskåp	VU/VF	Vattentkastare/ Vattenfördelare
	Diskho		
			Klädstång
			Uteplats

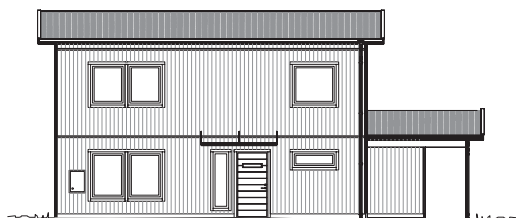
Stensjöparken 1

Hus 27, plan 2

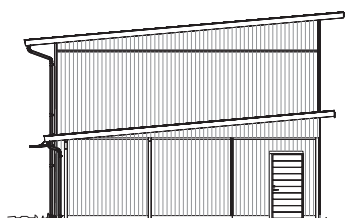


PLAN 2

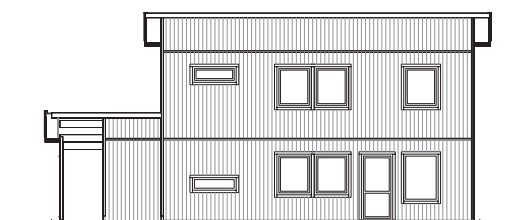
FASADRITNING



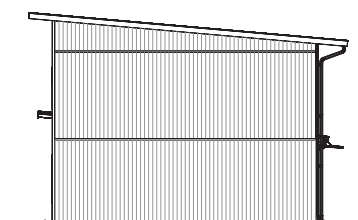
Fasad mot sydväst



Fasad mot sydöst

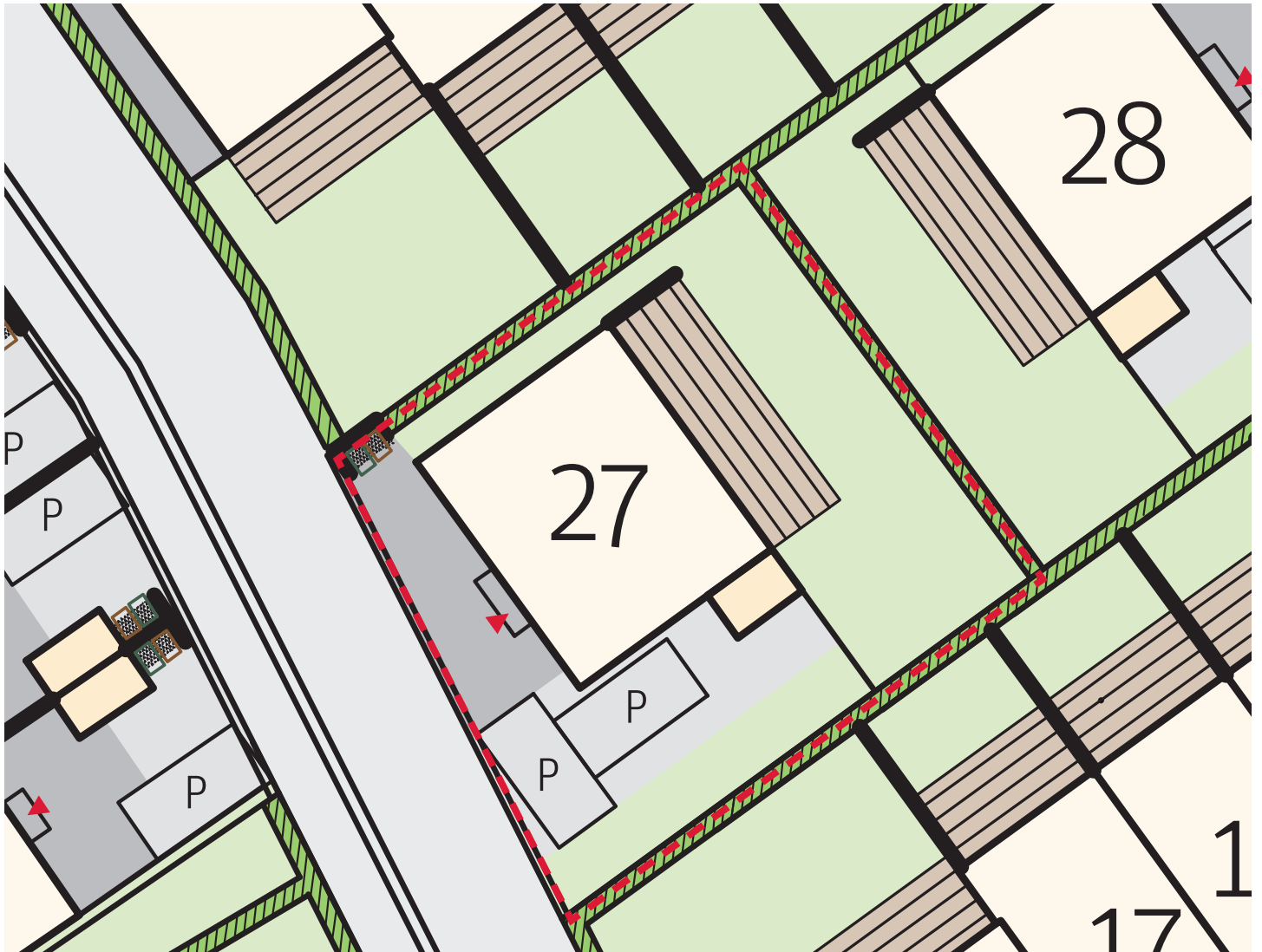


Fasad mot nordöst

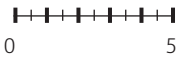


Fasad mot nordväst

Situationsplan radhus 27





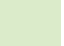


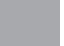

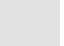


METER



FÖRKLARINGAR

Tomtareca ca 327 m².

- | | | | | | |
|---|---------------|---|------------|---|------------------------------|
|  | Träd |  | Häck |  | Altan med trätrall |
|  | Plantering |  | Gräsmatta |  | Förråd om ca 4m ² |
|  | Markhöjningar |  | Betongsten |  | Sopuppställning |
| | |  | Asfalt | | |

ORIENTERINGSFIGUR STENSJÖPARKEN

